

**WHO:**

Boaters, fishermen, kayakers and other recreational users can use this brochure to learn about boundaries and general regulations of the marine protected areas located along the Bay Area coastline.



**WHAT:**

California's network of coastal marine protected areas (MPAs) is the first of its kind in the nation. These MPAs safeguard unique habitats and a diversity of marine species.

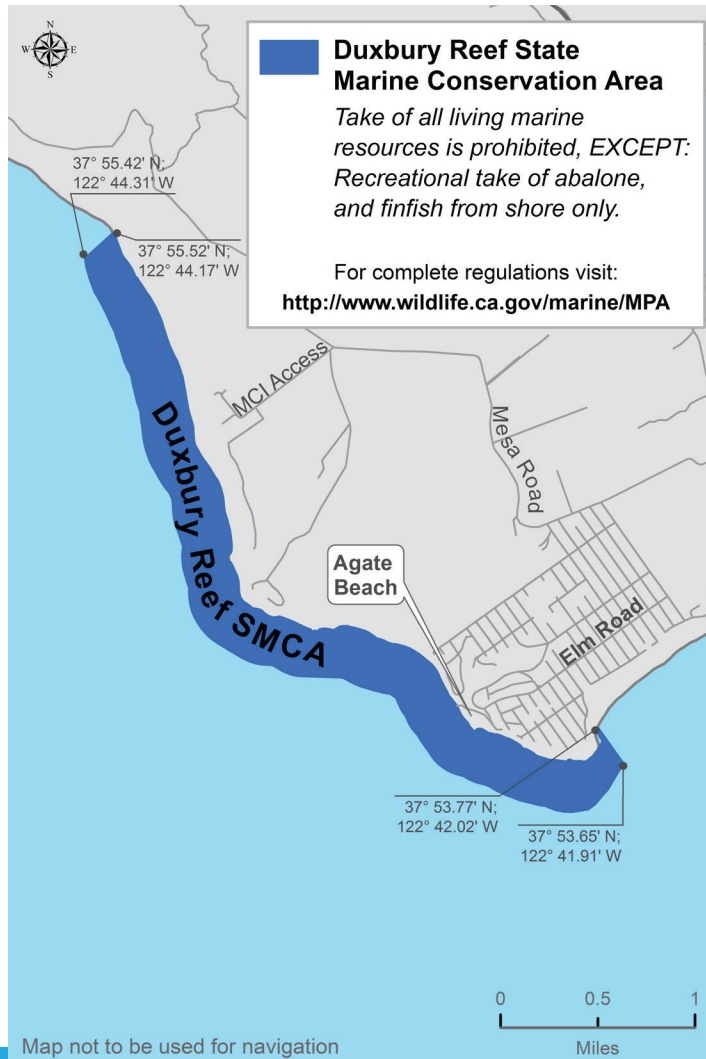


**HOW:**

The Golden Gate Collaborative is dedicated to assisting with education, outreach and enforcement of the MPAs located off San Francisco and Marin Counties. Our goal is to raise awareness of these special areas to protect them for future generations. We are local vessel captains, volunteers, scientists, aquaria, government agencies, nonprofits and docents.

[www.mpacollaborative.org](http://www.mpacollaborative.org)

For complete ocean fishing regulations visit: [www.dfg.ca.gov/marine/regulations.asp](http://www.dfg.ca.gov/marine/regulations.asp)



**Help Officers Protect our Fish and Wildlife**

If you see someone poaching or polluting, call CalTIP, anonymously, 24 hours a day, seven days a week. Together we can make a difference!  
1-888-334-CalTIP (1-888-334-2258)

Text an anonymous report to CALTIP. To: 847411 (tip411); Message: Caltip "your report".



This document does not replace the official laws and regulations found in the California Fish and Game Code or the California Code of Regulations Title 14.

**How to Explore Tidepools**



Never remove animals, shells, seaweed, plants or rocks from the tidepools.



Never pick up animals...observe them where they are.



Walk gently, taking care not to step on plants or animals.



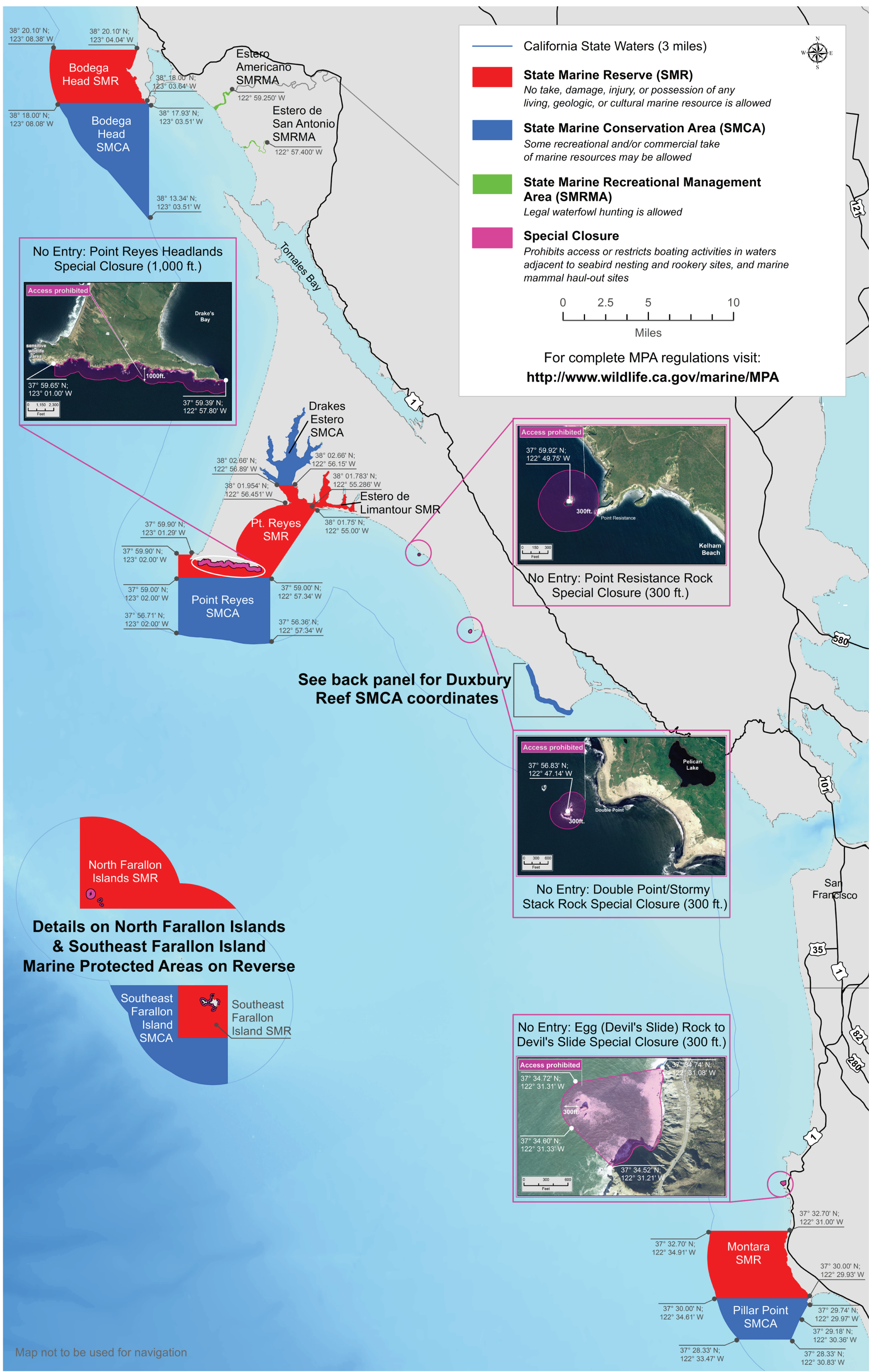
Never turn over rocks.

Marine Protected Areas off the **GOLDEN GATE**



A Community-Based Guide to Marine Protected Areas outside the Golden Gate for Recreational Fishermen, Kayakers, Beach-goers, Boaters and Ocean Stewards.





California State Waters (3 miles)

**State Marine Reserve (SMR)**  
No take, damage, injury, or possession of any living, geologic, or cultural marine resource is allowed

**State Marine Conservation Area (SMCA)**  
Some recreational and/or commercial take of marine resources may be allowed

**State Marine Recreational Management Area (SMRMA)**  
Legal waterfowl hunting is allowed

**Special Closure**  
Prohibits access or restricts boating activities in waters adjacent to seabird nesting and rookery sites, and marine mammal haul-out sites

0 2.5 5 10  
Miles

For complete MPA regulations visit:  
<http://www.wildlife.ca.gov/marine/MPA>

**No Entry: Point Reyes Headlands Special Closure (1,000 ft.)**

Access prohibited

Drake's Bay

sensitive wildlife areas

1000ft.

37° 59.65' N; 123° 01.00' W

37° 59.39' N; 122° 57.80' W

0 1,150 2,300  
Feet

**No Entry: Point Resistance Rock Special Closure (300 ft.)**

Access prohibited

37° 59.92' N; 122° 49.75' W

300ft.

Point Resistance

Kelham Beach

0 150 300  
Feet

**No Entry: Double Point/Stormy Stack Rock Special Closure (300 ft.)**

Access prohibited

37° 56.83' N; 122° 47.14' W

300ft.

Double Point

Pelican Lake

0 300 600  
Feet

**No Entry: Egg (Devil's Slide) Rock to Devil's Slide Special Closure (300 ft.)**

Access prohibited

37° 34.72' N; 122° 31.31' W

300ft.

37° 34.60' N; 122° 31.33' W

37° 34.52' N; 122° 31.21' W

0 300 600  
Feet

**Details on North Farallon Islands & Southeast Farallon Island Marine Protected Areas on Reverse**

North Farallon Islands SMR

Southeast Farallon Island SMCA

Southeast Farallon Island SMR

See back panel for Duxbury Reef SMCA coordinates