

For more information please go to www.mpacollaborative.org/catalina.html

California Fishing Regulations

- A fishing license is required for all fishing and collecting, except for fishing from a public fishing pier in ocean waters. (Code 1.88) Fishing report cards for Sturgeon and Spiny Lobster are required to take either of these species from a public pier in ocean waters.
- “Take” means to hunt, pursue, catch, capture, or kill fish, mollusks, or crustaceans, or attempting to do so.

MPA Regulations

- Boats are allowed to anchor and transit through an MPA with catch on board, however, fishing gear may not be deployed when in marine reserves. See code 632(a)(7) and 632(a)(8) and 632(b).
- Unless otherwise stated all non-consumptive recreational activities such as swimming, wading, boating, diving, and surfing are allowed in MPAs.
- Visit the CA Department of Fish and Wildlife website for more information about MPA boundaries and regulations at: www.wildlife.ca.gov/MPAs

California's MPAs

- California was the first state in the U.S. to establish a statewide network of MPAs. There are now 124 ecologically connected MPAs statewide.
- Major revisions and additions to Southern California MPAs went into effect in state waters on January 1, 2012.
- The Southern California region of the MPA network consists of 50 MPAs, including the Channel Islands MPAs. The 50 MPAs in the region cover approximately 15% of Southern California state waters.

About Marine Protected Areas

- Marine protected areas, or MPAs, are specially designated underwater areas that prohibit or limit the take of marine resources.
- MPAs are recognized tools for protecting and restoring marine life. MPAs foster diverse and healthy habitats, safeguarding the ocean's resources for economic, recreational, and environmental benefits now and into the future.

Catalina's

Marine Protected Areas (MPAs)

MPAS	PROHIBITED/PERMITTED USES
State Marine Reserve (SMR)	It is unlawful to injure, damage, take, or possess any living, geological, or cultural marine resource. See CCR T14 §632(b) for details.
Long Point State Marine Reserve	1. It is unlawful to injure, damage, take, or possess any living, geological, or cultural marine resource for recreational and/or commercial purposes. Take incidental to certain permitted activities may be allowed. Other restrictions may apply. See CCR T14 §632(b) for details.
No-Take State Marine Conservation Area (No-Take SMCA)	2. Casino Point - Feeding of fish for marine life viewing is allowed
Blue Cavern Onshore	3. It is unlawful to injure, damage, take, or possess any living, geological, or cultural marine resource for recreational and/or commercial purposes. EXCEPT:
Casino Point	4. Lover's Cove - The recreational take by hook-and-line from the Cabrillo Mole and feeding of fish for marine life viewing is allowed.
State Marine Conservation Area (SMCA)	5. Farnsworth Onshore
Lover's Cove	6. Farnsworth Offshore
Farnsworth Onshore	7. Cat Harbor
Farnsworth Offshore	8. Arrow Point to Lion Head Point
Cat Harbor	9. Blue Cavern Offshore
Arrow Point to Lion Head Point	<p>Farnsworth Offshore - The recreational take by spearfishing of white seabass and pelagic finfish; marlin, tunas, and dorado (dolphinfish) (Coryphaena hippurus) by trolling; and market squid by hand-held dip net is allowed. The commercial take of swordfish by harpoon; and coastal pelagic species by round haul net, brail gear, and light boat is allowed.</p> <p>Farnsworth Offshore - The recreational take by spearfishing of white seabass and pelagic finfish; marlin, tunas, and dorado (dolphinfish) (Coryphaena hippurus) by trolling; and market squid by hand-held dip net is allowed. The commercial take of swordfish by harpoon; and coastal pelagic species by round haul net, brail gear, and light boat is allowed.</p> <p>Cat Harbor - The recreational take of finfish by hook-and-line or by spearfishing, market squid by hook-and-line, and spiny lobster and sea urchin is allowed. The commercial take of sea cucumbers by diving only, and spiny lobster and sea urchin is allowed.</p> <p>Arrow Point to Lion Head Point - All recreational take is allowed except the take of invertebrates is prohibited. ...in accordance with current regulations.</p> <p>Blue Cavern Offshore - The recreational take of pelagic finfish by hook-and-line or by spearfishing, white seabass by spearfishing and market squid by hand-held dip net is allowed. The commercial take of pelagic finfish* by hook-and-line and swordfish by harpoon is allowed.</p>

Regulations

This document is provided as a courtesy and does not replace the official laws and regulations found in the California Fish and Game Code or the California Code of Regulations Section 632, Title 14.

Avalon Harbor Department:
(310) 510-0535
www.wildlife.ca.gov/MPAs

Catalina Island Conservancy:
(310) 510-0954
catalinaconservancy.org

LA County Sheriff's Department Avalon:
(310) 510-0174

Radio Channels:
West End 9, East End 12, US Coast Guard 16

Report Injured Marine Mammals & Seabirds:
(310) 650-5830

Report Oil Spills:
800-852-7550

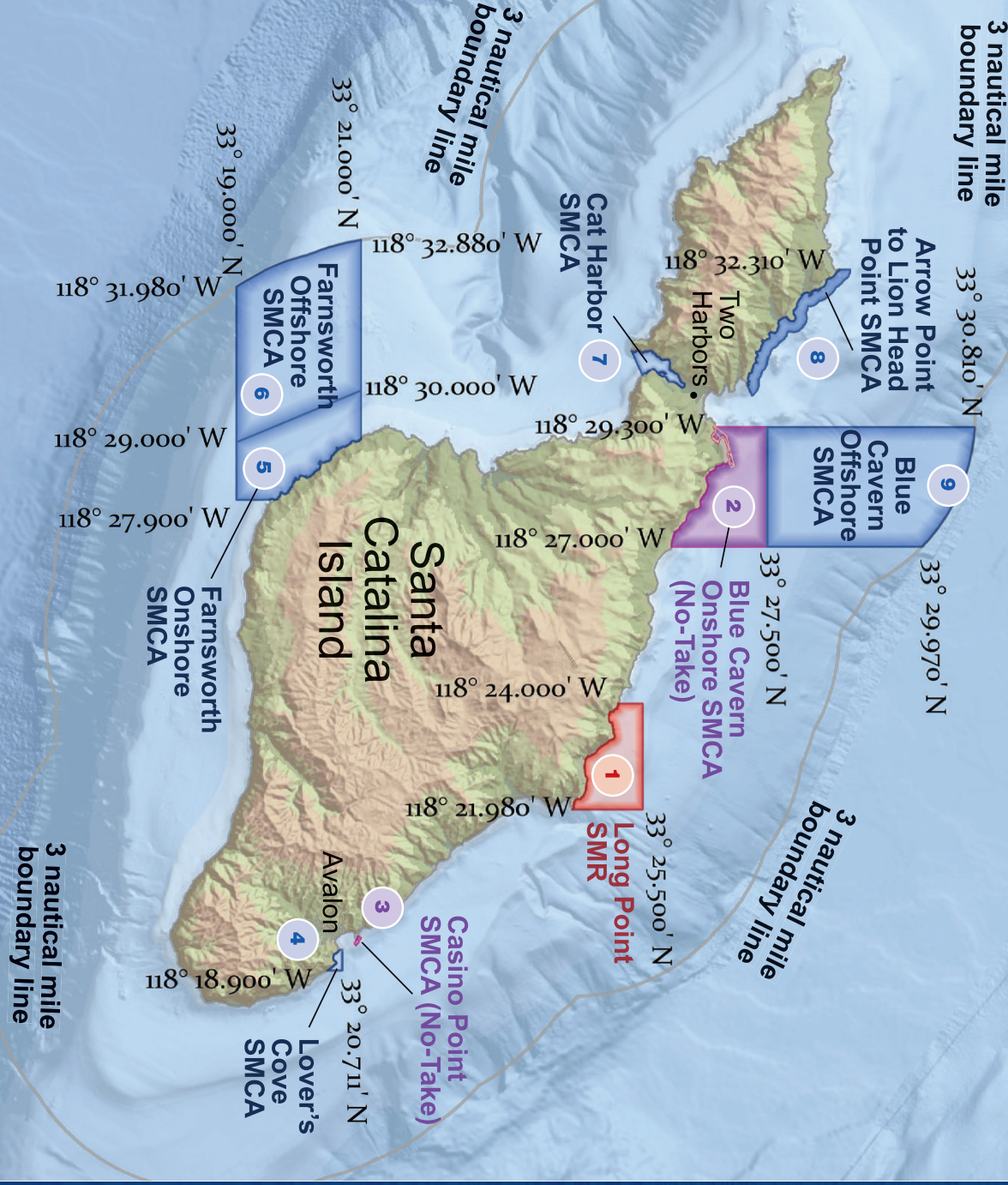
Report Poaching & Polluting:
1-888-334-CalTIP
1-800-334-2258

Visitor Information:
(310) 510-1520
www.catalinachamber.com

Catalina MPA Collaborative
www.mpacollaborative.org/catalina.html



Map not to be used for navigation

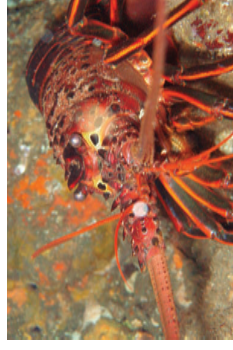
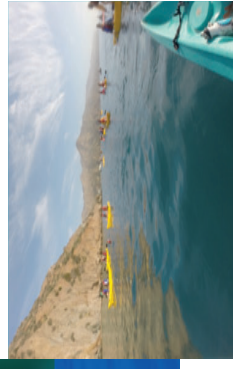
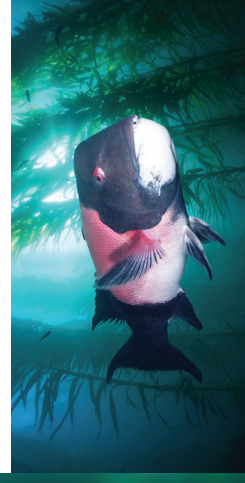


Know the Rules Before You Head Out

CATALINA MARINE PROTECTED AREAS



A Guide to Catalina's Marine Protected Areas



- Long Point (SMR) • Casino Point SMCA (No-Take SMCA)
- Lover's Cove (SMCA) • Farnsworth Onshore/Offshore (SMCA)
- Cat Harbor (SMCA) • Arrow Point to Lion Head Point (SMCA)
- Blue Cavern Onshore (No-Take) • Blue Cavern Offshore (SMCA)

SANTA CATALINA ISLAND MARINE PROTECTED AREA BOUNDARIES

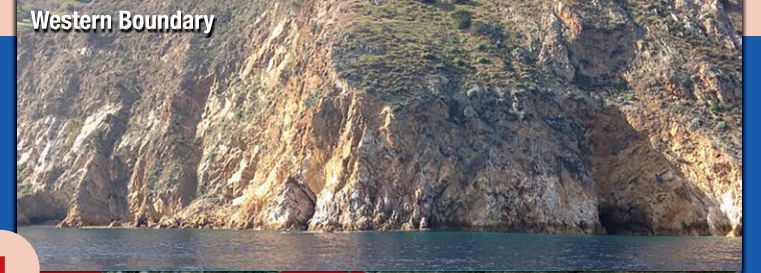
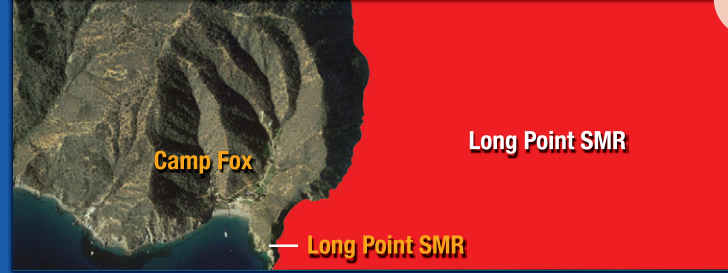
This document is provided as a courtesy only and photos are not intended for navigational use. Use GPS coordinates to determine the exact location of MPA boundaries.

Farnsworth Onshore SMCA



5

Long Point SMR



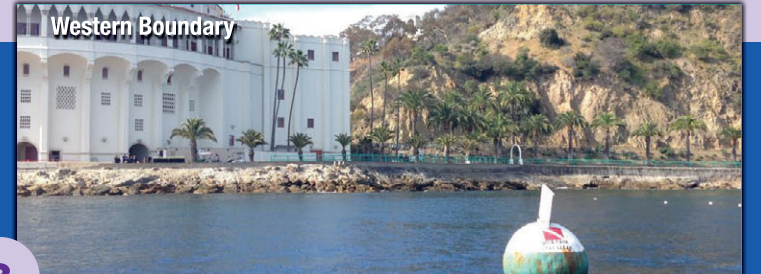
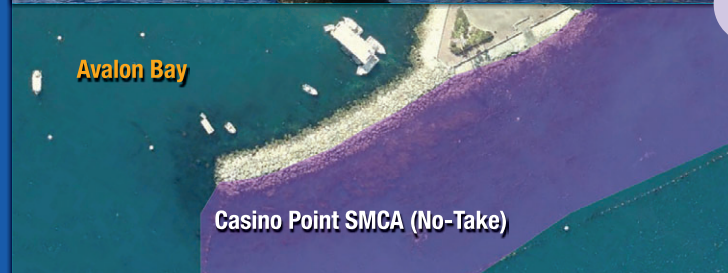
1

Arrow Point to Lion Head Point SMCA



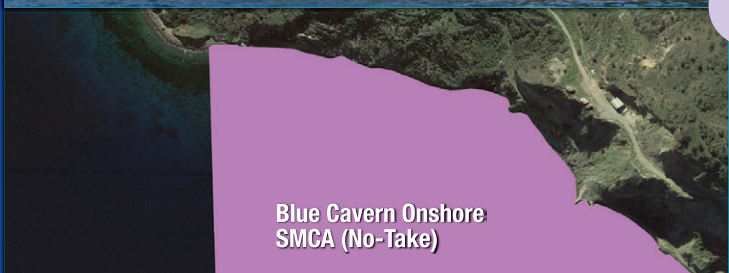
8

Casino Point SMCA (No-Take)



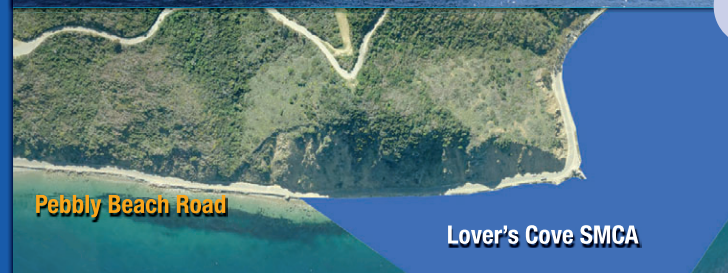
3

Blue Cavern Onshore SMCA (No-Take)



2

Lover's Cove SMCA



4